



Rockford Sanitary Systems, Inc.

ROCKFORD, IL 61125-0963

(815) 229-5077 - (800) 747-5077 - FAX (815) 229-5108

WEB SITE-www.rkfdseparators.com E MAIL-rssem@rkfdseparators.com

MODEL NO. B-2635E16

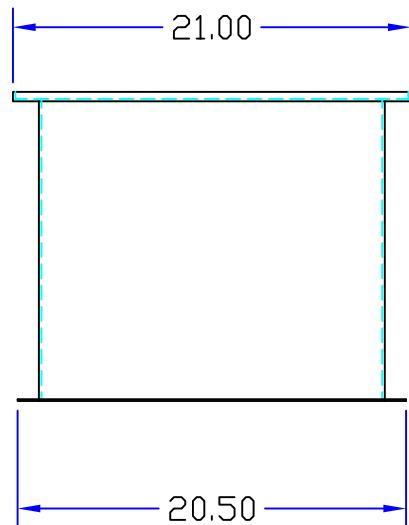
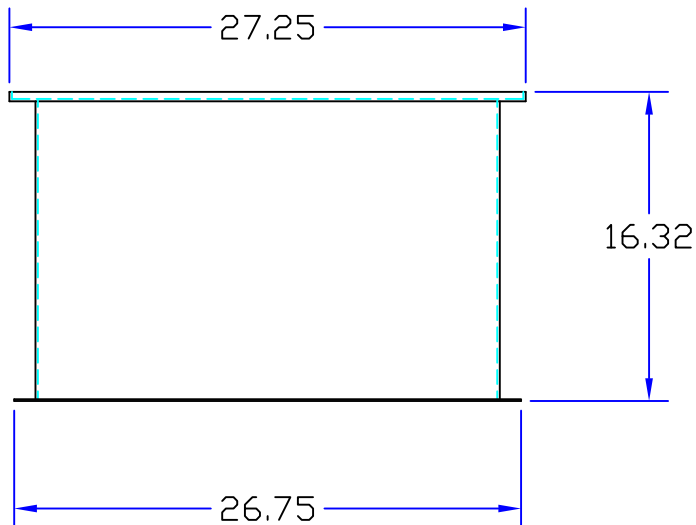
INTERCEPTOR EXTENSION

DRAWN BY

W.R.W.

QUOTE #

JOB NAME



OPTIONAL FEATURES (ADDITIONAL COST)

☐ ANCHOR FLANGE WITH CLAMP DEVICE

☐ EPOXY COATING

☐ STAINLESS STEEL CONSTRUCTION

☒ EXTENSION 16.38 INCHES

## Specifications

Rockford Model B-2635-E16 all welded steel extension for flush with the floor installation secured with provided clamps, heavy duty leak-proof gasket, bituminous coating inside and outside.

Optional features (Additional cost) listed above

Approved By

Company

Date